

## Accessories for circular gauges

Section: 1

Sheet No.: 259GB

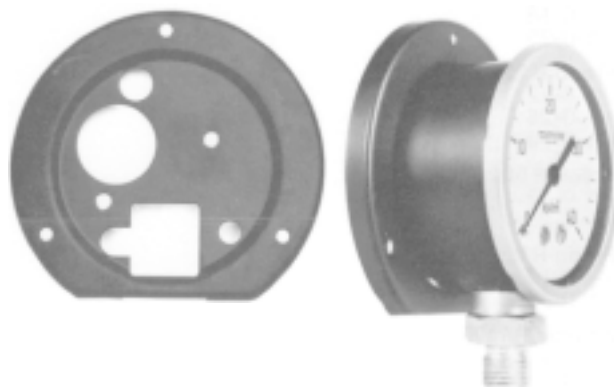
Date: june 1999

TEMPRESS circular gauges - mainly temperature and pressure gauges - are as a rule supplied complete with accessories according to the type ordered (-1, -2 or -3).

When ordering accessories separately, please refer to the part numbers given below.

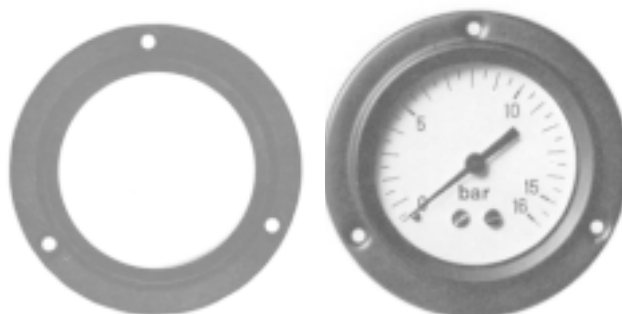
### Rear flange (-1)

Order numbers:	ø63	ø80	ø100	ø160
Black steel	3054	3085	3098	3105
AISI 316	3055	3086	3099	3106



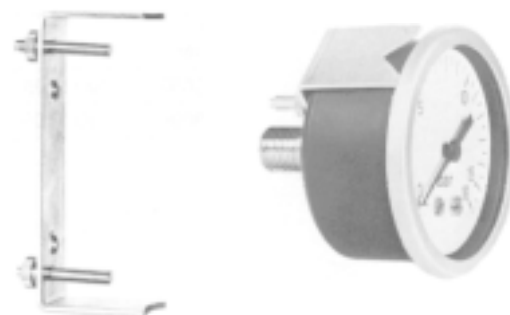
### Front flange (-2)

Order numbers:	ø63	ø80	ø100	ø160
Black steel	662	660	580	659
AISI 316	4242	4245	4248	4251
Polished AISI316	7547	4246	4249	7137
Nickel plated steel	1308			
Chr. plated brass		2091		



### Clamp fixing kit (-3)

Single gauges:	ø63	ø80	ø100	ø160
Zinc plated steel	2267	4178	768	
AISI 316	4286	4288	4295	5005
Duplex/diff. gauges:	ø80	ø100	ø160	
Zinc plated steel		4290	4182	
AISI 316			4299	4307



Agent:



**TEMPRESS A/S**

P.O. Box 2090  
 Nordlandsvej 64-66  
 DK-8240 Risskov, Denmark  
 Tel.: +45 8932 5200  
 Fax.: +45 8932 5213